


VCCI  **USAID**
FROM THE AMERICAN PEOPLE

THE 2013 PROVINCIAL COMPETITIVENESS INDEX

Hanoi, March 20, 2014

Dau Anh Tuan
*The Chamber of
Commerce and Industry*

ORGANIZATION

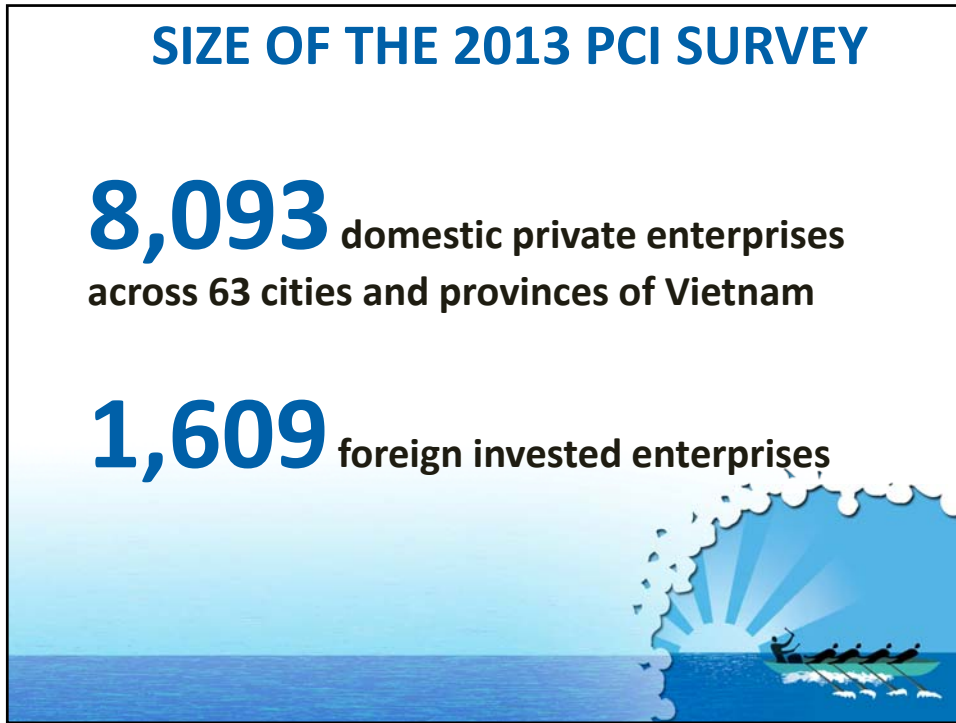
- An Overview of the 2013 PCI and changes in methodology
- The 2013 PCI Results
- Infrastructure
- Economic governance over 8 years (2006-2013)
- Participation



SIZE OF THE 2013 PCI SURVEY

8,093 domestic private enterprises
across 63 cities and provinces of Vietnam

1,609 foreign invested enterprises

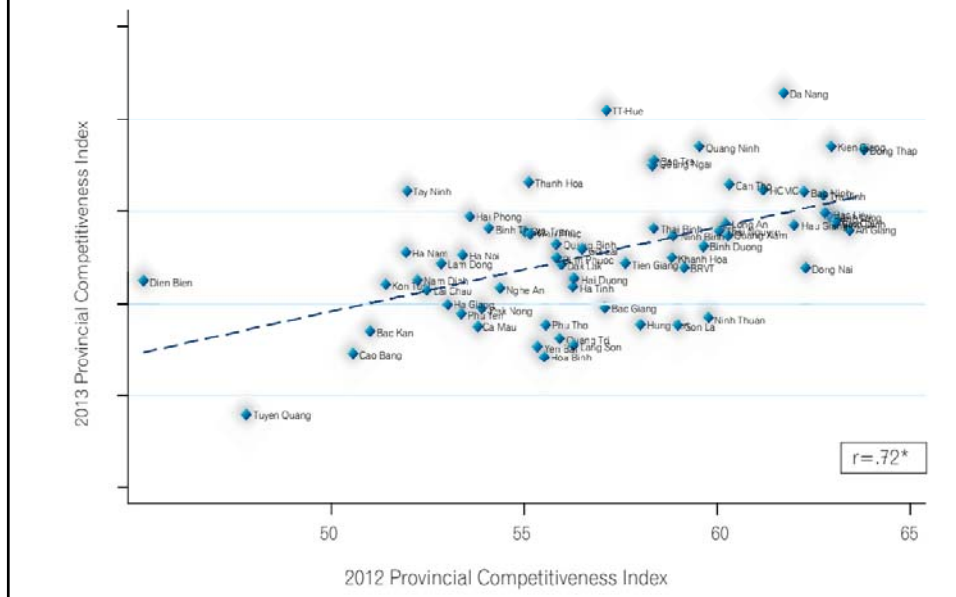


PCI METHODOLOGY OVERTIME

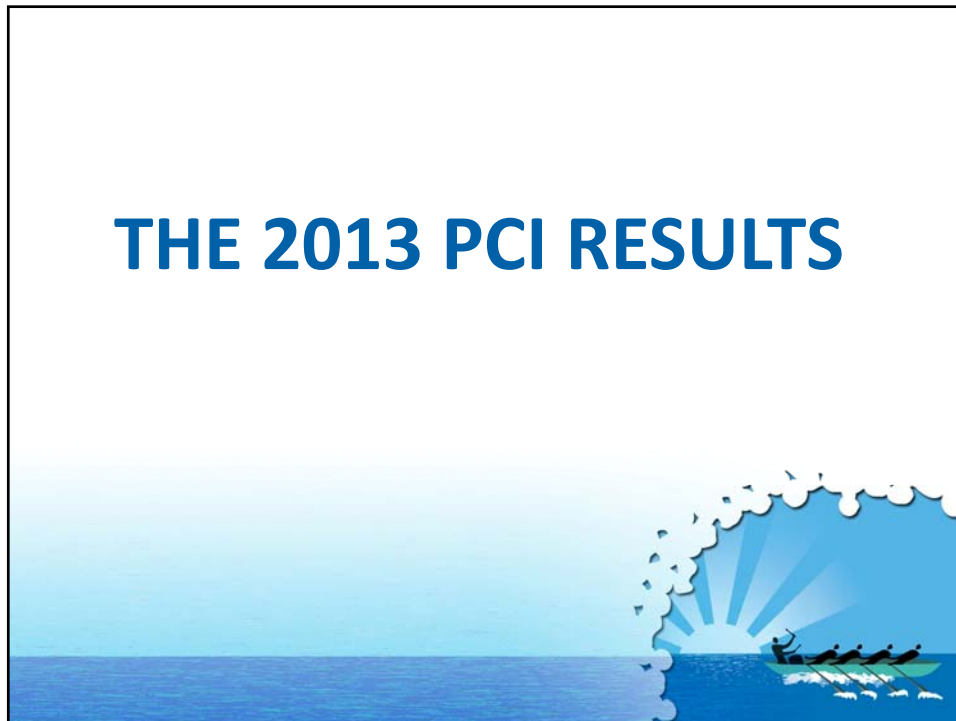
2005 2006 2009 2013

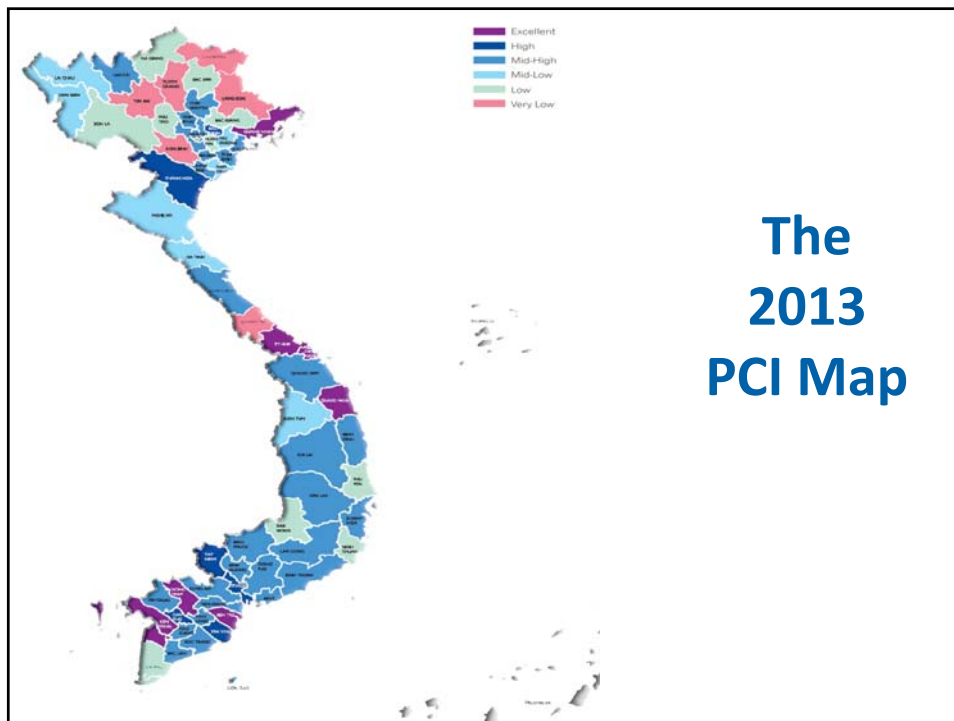
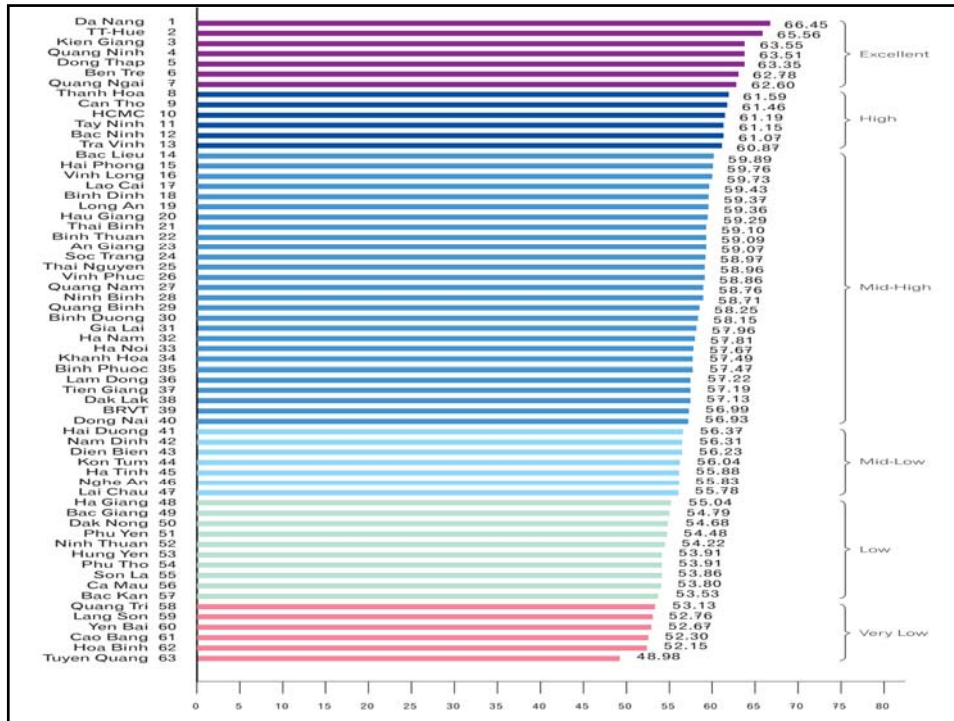
SUB-INDEX	WEIGHTS	SUB-INDEX	WEIGHTS	SUB-INDEX	WEIGHTS	SUB-INDEX	WEIGHTS
Entry Cost	17.1%	Entry Cost	5%	Entry Cost	10%	Entry Cost	5%
Land access	8.4%	Land access	5%	Land access	5%	Land access	5%
Transparency	16.1%	Transparency	15%	Transparency	20%	Transparency	20%
Time costs	9.6%	Time costs	10%	Time costs	15%	Time costs	5%
Informal charges	7.6%	Informal charges	5%	Informal charges	10%	Informal charges	10%
Proactivity	16.8%	Proactivity	15%	Proactivity	10%	Proactivity	5%
Private sector development	11.1%	Private sector development	15%	Business support services	5%	Business support services	20%
State Owned Enterprise bias	13.1%	Stateowned Enterprise bias	5%	State Owned Enterprise bias	5%	Policy Bias	5%
Implementation of central policies	0.2%	Implementation of central policies	0.2%	Labor training	20%	Labor training	20%
Surveyed provinces	42/64	Labor training	15%	Legal institutions	5%	Legal institutions	5%
		Legal institutions	10%	Surveyed provinces	63/63	Surveyed provinces	63/63
		Surveyed provinces	64/64				

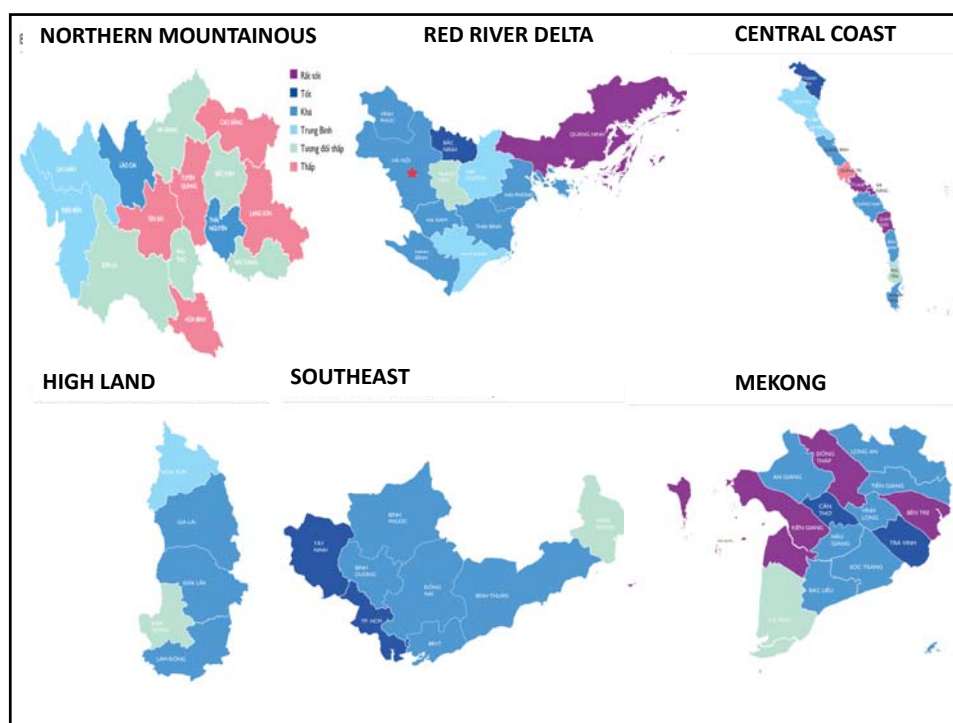
Correlation between 2013 and 2012 PCIs



THE 2013 PCI RESULTS

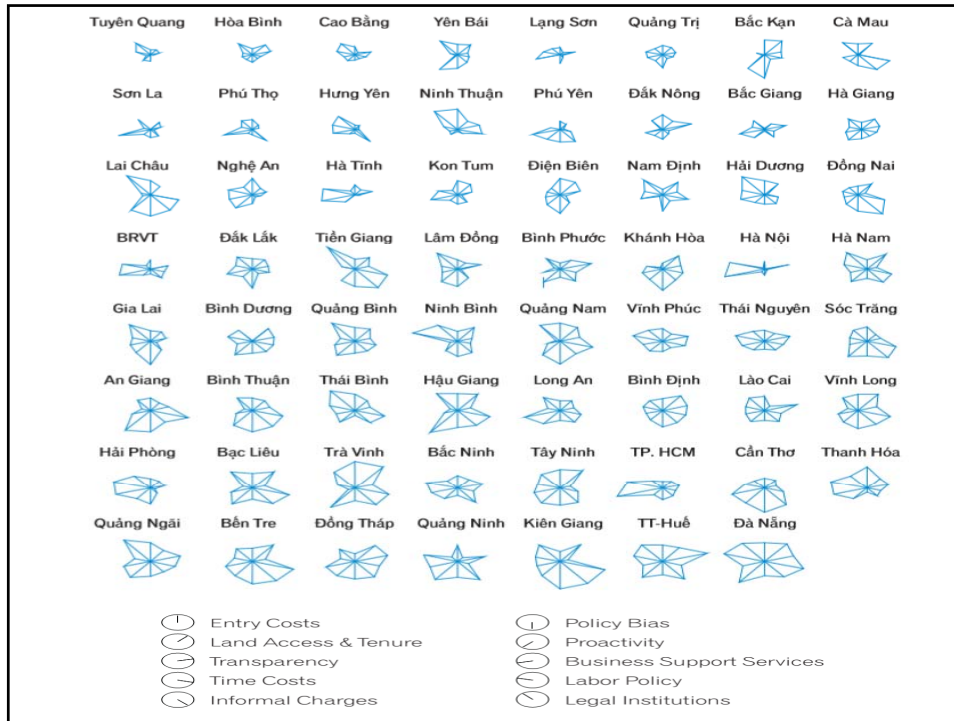




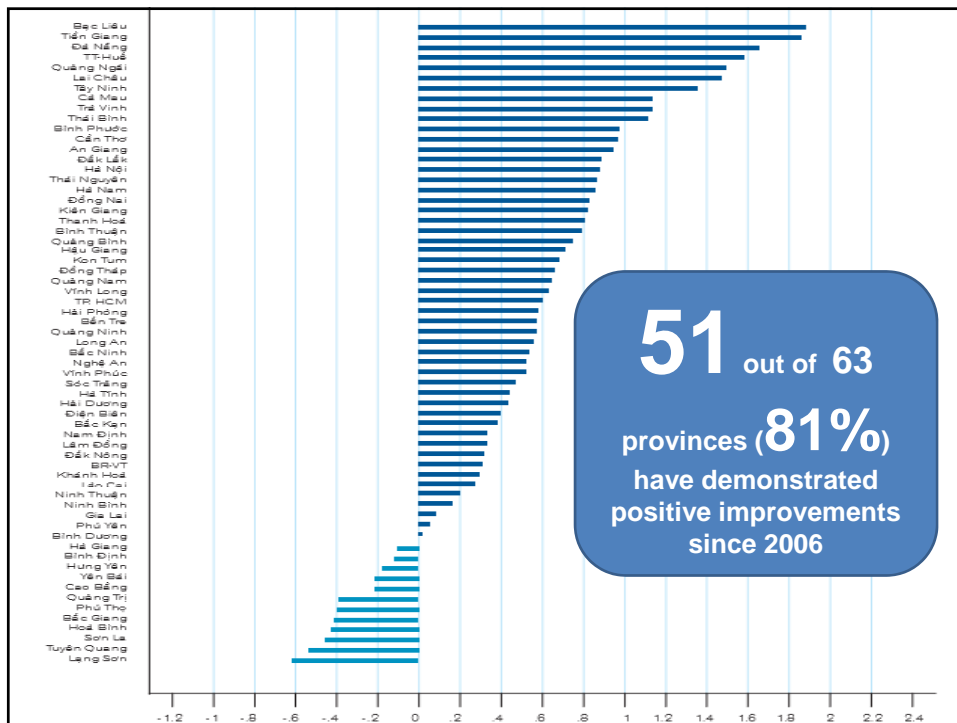
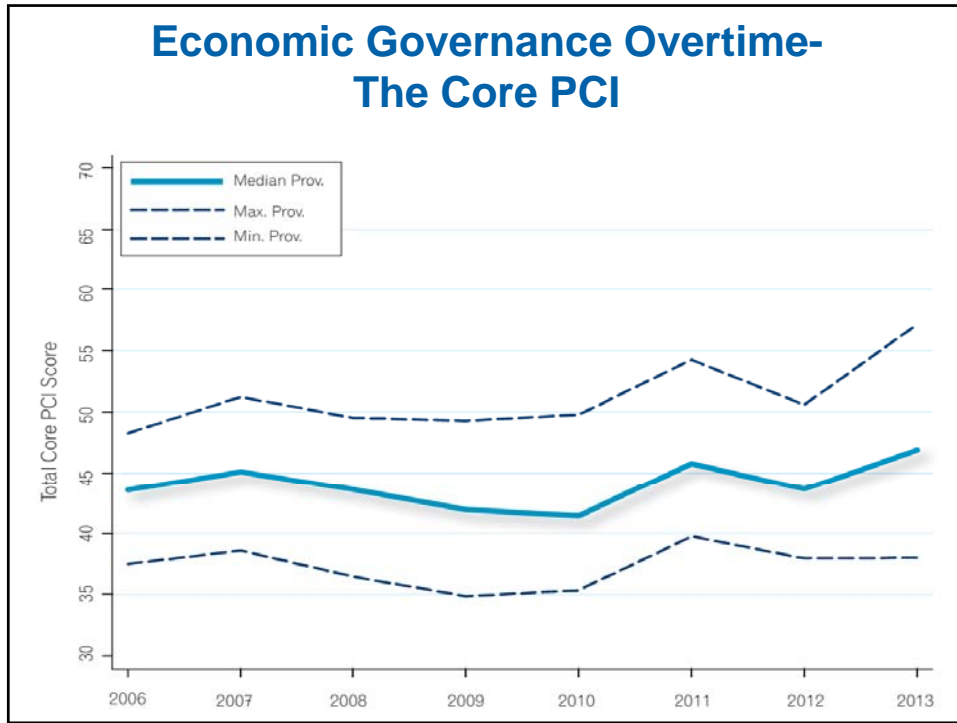


Top and bottom-ranked Provinces in each sub-index of 2013 PCI

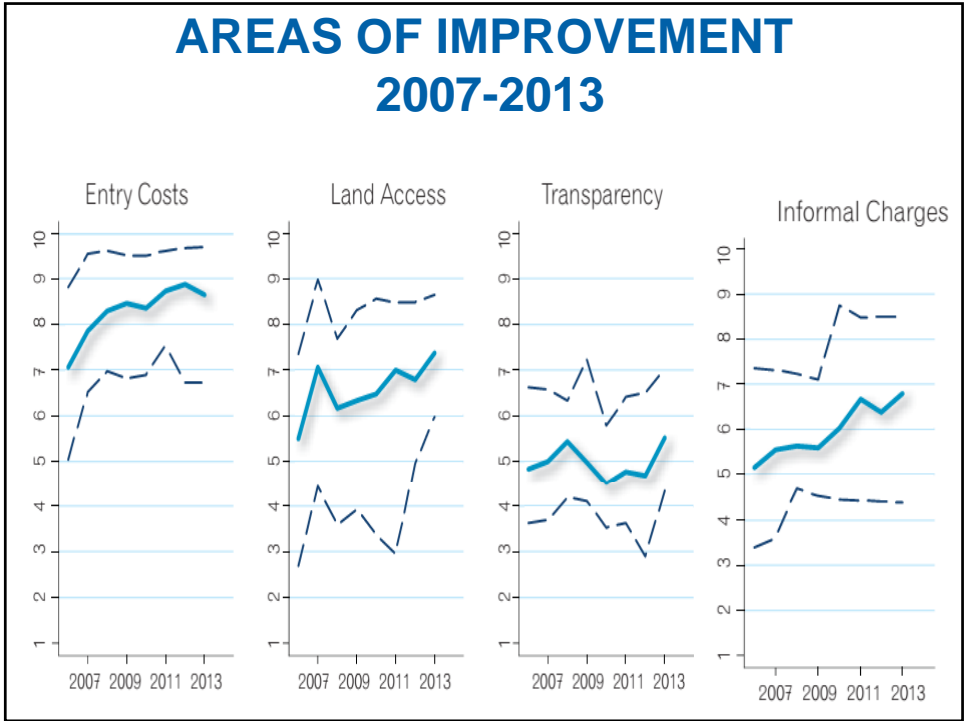
Sub-index	Top	Score	Bottom	Score
Entry Cost	Trà Vinh	9.47	Sơn La	6.10
Land Access	Trà Vinh	8.68	BRVT	5.31
Transparency	TT-Huế	7.63	Lai Châu	4.45
Time Costs	Kiên Giang	8.36	Phú Thọ	4.89
Informal Charges	Kiên Giang	8.94	Tuyên Quang	4.33
Policy Bias	Kiên Giang	8.19	Hà Tĩnh	3.25
Proactivity	Hậu Giang	8.06	Lạng Sơn	3.12
Business Support Services	Tp. HCM	7.14	Tiền Giang	3.68
Labor Training	Ninh Bình	6.75	Cà Mau	4.48
Legal Institutions	Tiền Giang	7.30	Phú Yên	3.68



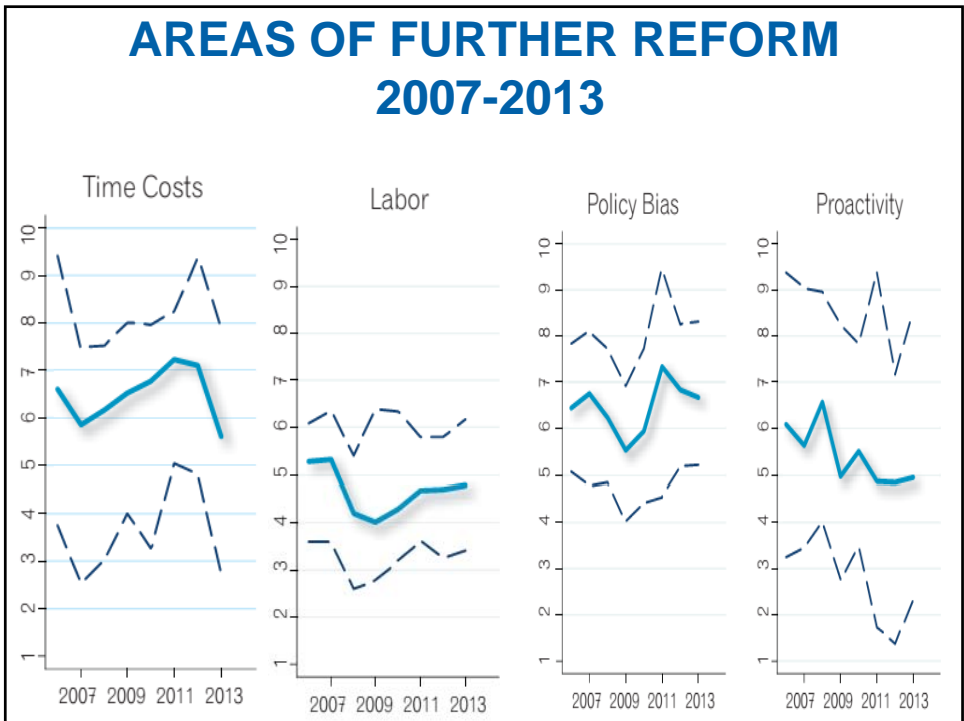
ECONOMIC GOVERNANCE OVER 8 YEARS (2006-2013)

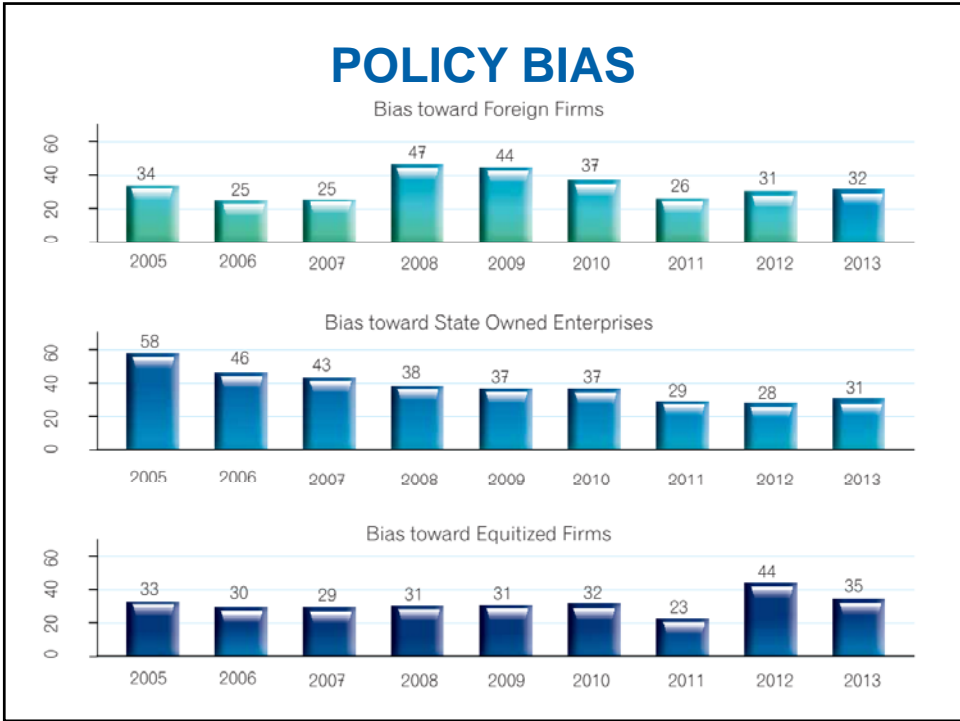


AREAS OF IMPROVEMENT 2007-2013

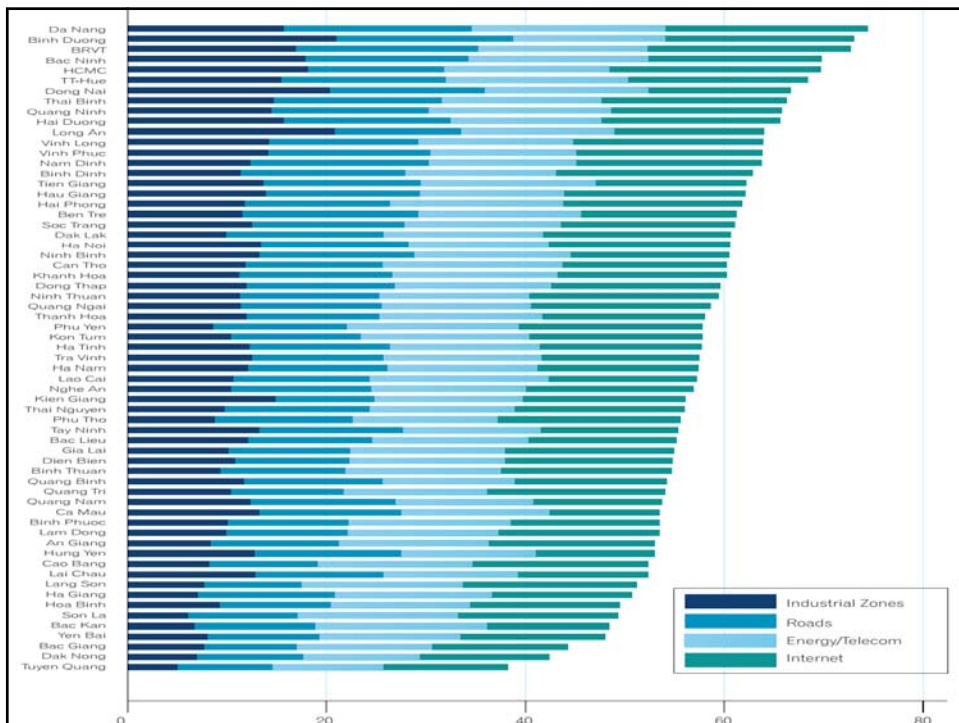
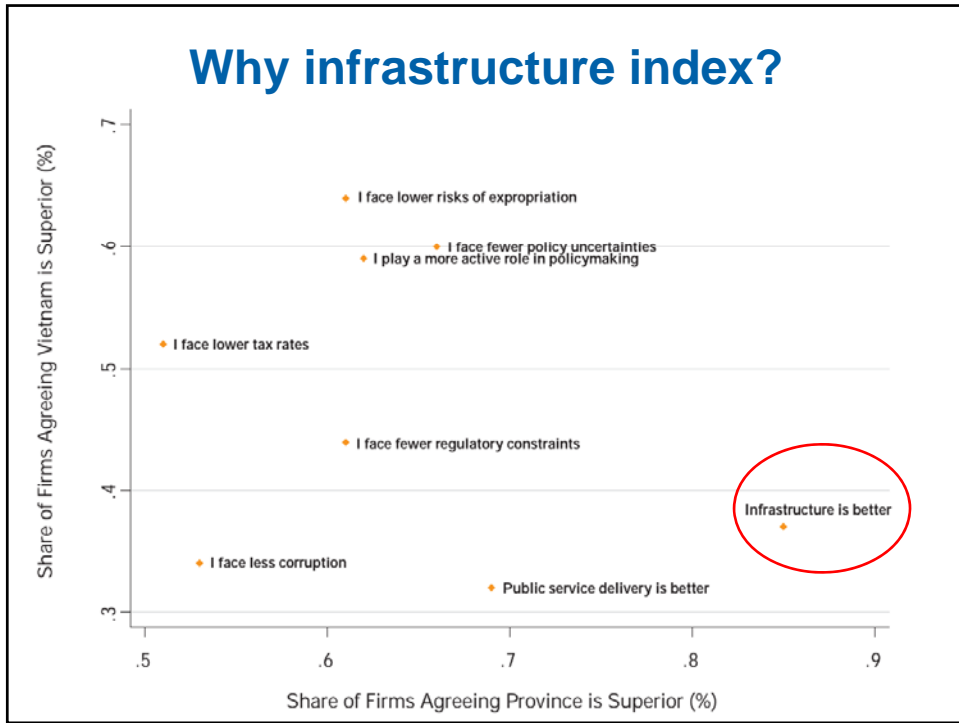


AREAS OF FURTHER REFORM 2007-2013





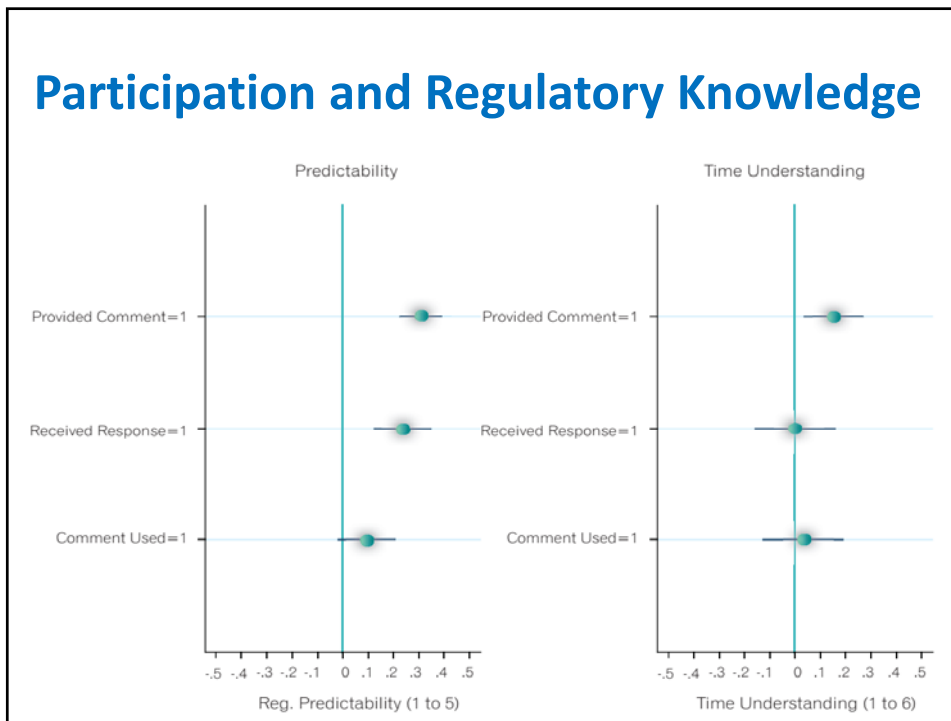
Why infrastructure index?



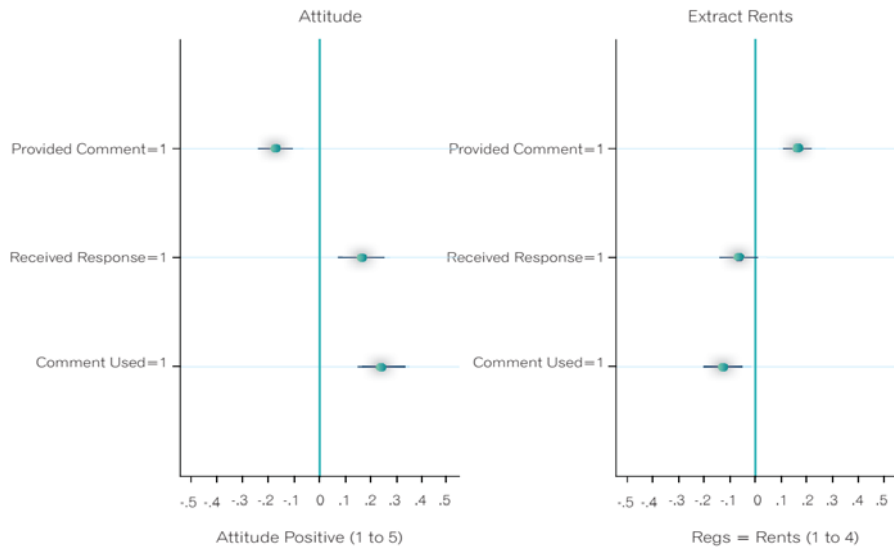
Firm's Participation

Type of participation in decision making	Total		Received Response	Comment Used
	n	%	Mean	Mean
Business-government dialogue	802	59.76	67.4%	36.0%
Local deputies to the National Assembly	58	4.32	54.5%	34.8%
"Dialogue forums on the internet, provincial website"	100	7.45	42.6%	20.2%
Business associations and trade associations	193	14.38	48.2%	29.4%
Direct comments to relevant state agencies	153	11.4	56.1%	36.7%
Others	36	2.68	15.4%	7.7%

Participation and Regulatory Knowledge



Political Participation and Confidence in government agencies



THANK YOU!

